

# AP Memory Technology Corporation

## Roadshow

2018.03.29  
KGI Security Comp.  
12F

# DISCLAIMER

The forward-looking statements contained in the presentation are subject to risks and uncertainties and actual results may differ materially from those expressed or implied in these forward-looking statements.

AP Memory makes no representation or warranty as to the accuracy or completeness of these forward-looking statements and nor does AP Memory undertake any obligation to update any forward-looking statements, whether as a result of new information or future events.



# OUTLINES

- Introduction
- Financial Information
- Business Highlights
- Future Prospect

# Introduction

- Due to out of Nand Flash stock, 2017 revenue of LPDRAM did not increase as expected
- Hold the position and strategy consistently ;  
Recruit talents continuously
- Cooperate with Fab deeply
- Create new opportunity for current product
- Cook new product

# Financial Information

# 2017 Consolidated I/S

inNT\$K	2017	2016	ΔAMT	Δ%
Revenue	4,236,815	3,161,932	1,074,883	34%
Costs	3,197,799	2,221,686	976,113	44%
Gross margin	1,039,016	940,246	98,770	11%
Gross margin %	24%	30%	6%	(20%)
Sales and marketing exp.	120,505	52,119	68,386	131%
Administration exp.	99,677	82,608	17,069	21%
Research and development exp.	386,325	281,139	105,186	37%
Operating exp.	606,507	415,866	190,641	46%
Operating income	432,509	524,380	(91,871)	(18%)
Operating income %	10%	17%	(7%)	(38%)
Non-operating G(L)	(114,708)	(18,868)	(95,840)	508%
Net income	236,389	386,897	(150,508)	(39%)
Net income %	5%	12%	(7%)	(54%)
Net income of the Company	251,315	404,909	(153,595)	(38%)
EPS(NT\$)	3.58	6.07	(2.49)	(41%)

# 2017 Consolidated B/S

inNT\$K	2017.12.31		2016.12.31		ΔAMT	Δ%
	AMT	%	AMT	%		
現金及約當現金、貨幣基金及3個月以上定存等	1,066,354	33%	1,480,690	38%	(414,336)	(28%)
應收帳款淨額	598,575	18%	1,090,771	28%	(492,196)	(45%)
存貨淨額	942,274	29%	652,932	17%	289,342	44%
待出售流動資產	46,109	1%	-	-	46,109	-
其他流動資產	109,487	4%	94,084	3%	15,403	16%
採用權益法之投資	74,303	2%	75,465	2%	(1,162)	(2%)
不動產、廠房及設備	68,341	2%	80,507	2%	(12,166)	(15%)
商譽	76,204	3%	76,290	2%	(86)	0%
其他無形資產	102,502	3%	113,638	3%	(11,136)	(10%)
其他	159,604	5%	189,733	5%	(30,129)	(16%)
資產總計	3,243,753	100%	3,854,110	100%	(610,357)	(16%)
長、短期借款	100,000	3%	280,066	8%	(180,066)	(64%)
應付帳款	385,981	13%	442,372	11%	(56,391)	(13%)
其他應付款)	101,840	3%	144,562	4%	(42,722)	(30%)
本期所得稅負債	47,649	1%	55,183	1%	(7,534)	(14%)
其他	10,941	-	26,483	1%	(15,542)	(59%)
負債總計	646,411	20%	948,666	25%	(302,255)	(32%)
普通股股本	709,293	22%	704,503	18%	4,790	1%
資本公積總計	826,272	25%	792,513	21%	33,759	4%
保留盈餘	1,085,893	34%	1,071,407	28%	14,486	1%
其他	(24,116)	(1%)	(21,837)	(1%)	(2,279)	10%
本公司業主權益	2,597,342	80%	2,546,586	66%	50,756	2%
非控制權益	-	-	358,858	9%	(358,858)	(100%)
權益總計	2,597,342	80%	2,905,444	75%	(308,102)	(11%)

# 2017 Statements of Cash Flow

	2017年	2016年
營業活動之現金流量		
營運產生之現金	556,637	492,381
收取之利息	7,395	5,213
支付之利息	(3,234)	-
支付之所得稅	(104,794)	(98,769)
營業活動之淨現金流入(出)	456,004	398,825
投資活動之現金流量		
投資活動之淨現金流入(出)	(10,808)	(77,967)
籌資活動之現金流量		
籌資活動之淨現金流入(出)	(755,828)	297,302
匯率變動對現金及約當現金之影響	(3,695)	(6,544)
現金及約當現金淨(減少)增加	(314,327)	611,616
年初現金及約當現金餘額	1,376,210	764,594
年底現金及約當現金餘額	1,061,883	1,376,210



# 2017 Financial Structures

	2017	2016
Current Ratio	427.29%	355.92%
Quick Ratio	267.63%	280.43%
Average A/R collection days	74天	119天
Days sales of inventory	108天	81天
Net income %	5.58%	12.24%
ROA	6.73%	13.11%

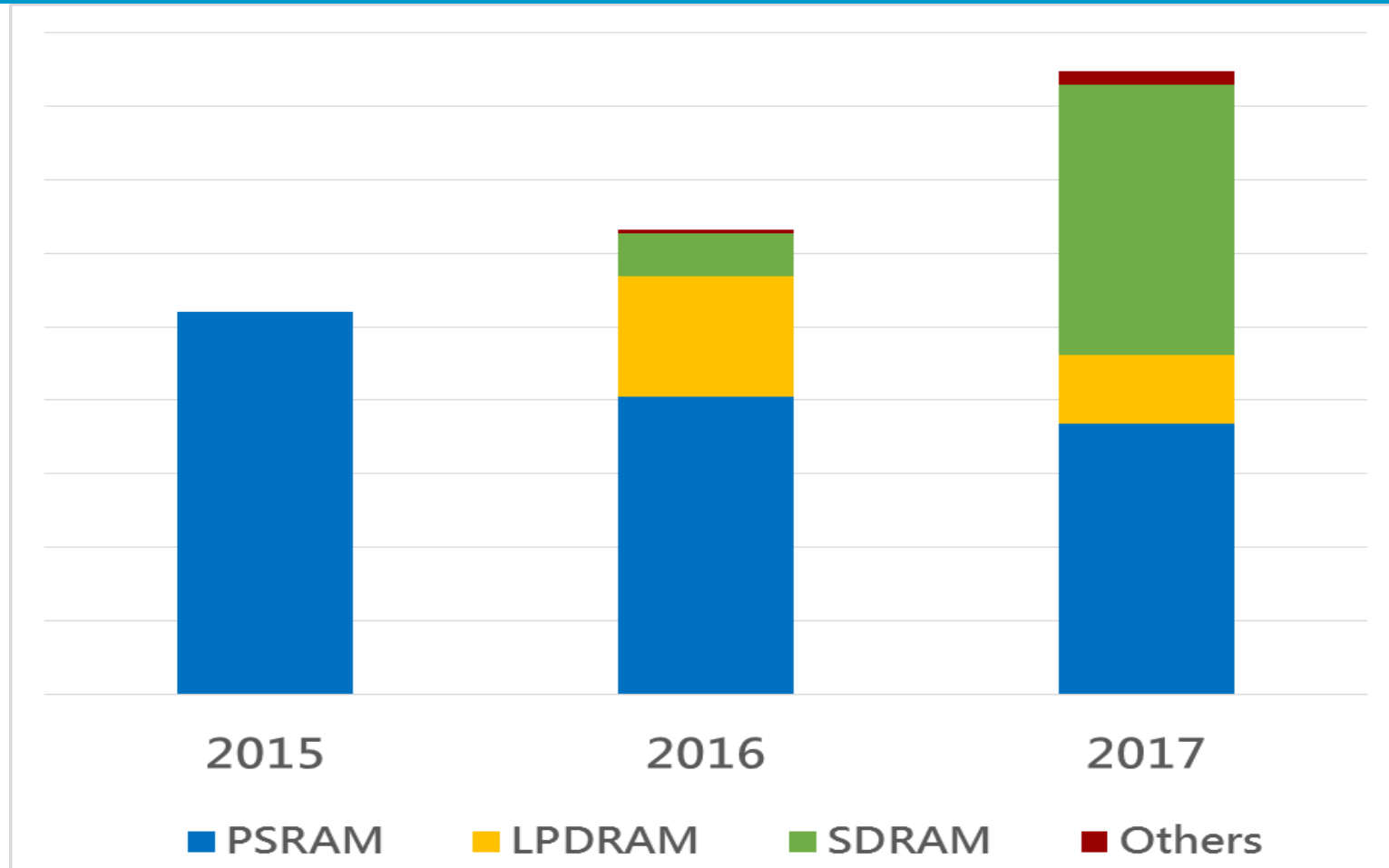
# Business Highlights

# Operating Performance

	2015	2016	2017
Revenue	2,602,510	3,161,932	4,236,815
GM %	36%	30%	24%
Operating Income	517,211	524,380	432,509

\* Consolidated financial information, ZTL included since 2016.11

# Product Mix



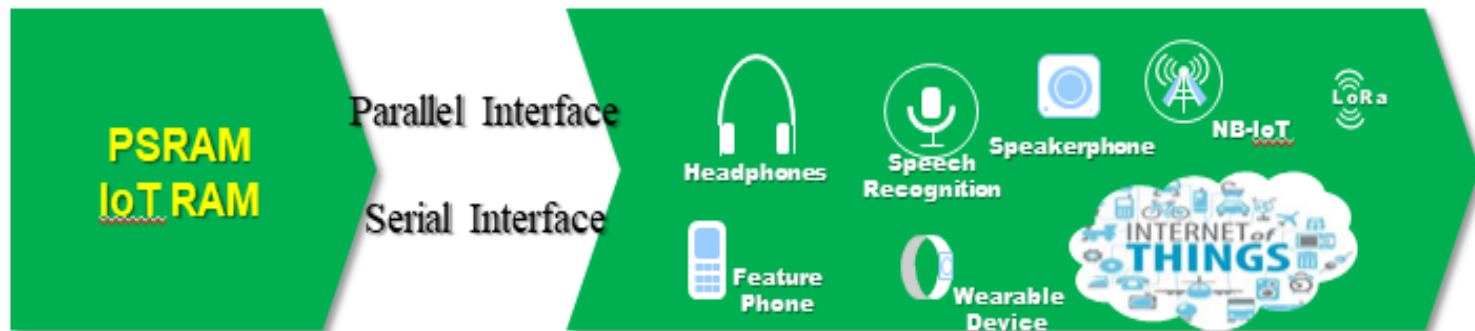
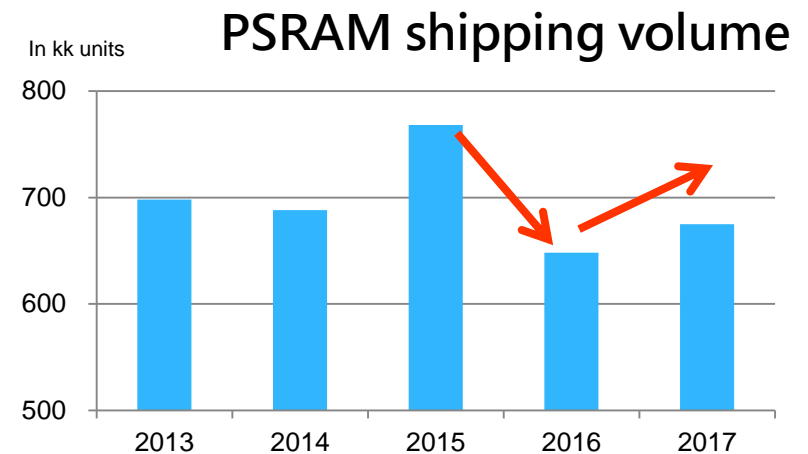
\* Consolidated financial information, ZTL included since 2016.11

# Main Product Line

- Differentiated Memory Product Line
  - PSRAM mainly
- Specialty Standard Memory Product Line
  - SDRAM mainly
- Mid-to-high Density Mobile Memory Product Line
  - LPDRAM mainly

# Differentiated Memory Product Line

- Main product -PSRAM
  - Best selection for MCU memory
  - Expanding IoT application
  - New application market



# Specialty Standard Memory Product Line

- Main product -SDRAM
  - For use with multiple MPU applications
  - Increase 1<sup>st</sup> tier customer penetration
  - Focus on the application market of industrial control and automation system



# Mid-to-high Density Mobile Memory Product Line

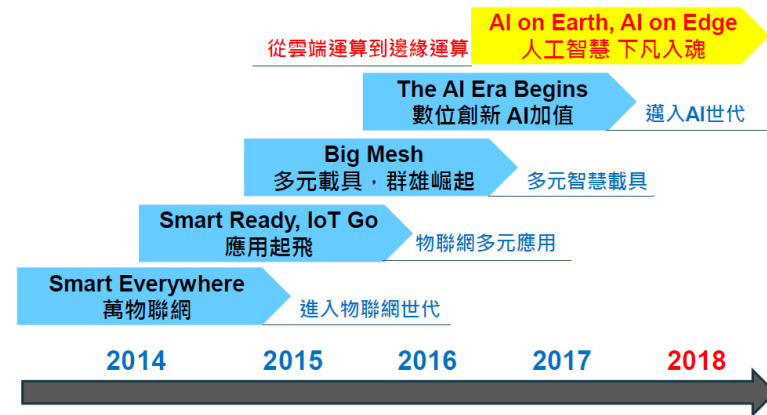
- Main product -LPDRAM
  - Complete mobile memory product line
  - Fully support the memory demand of the mobile devices
  - Strong demand for low density LTE phone market



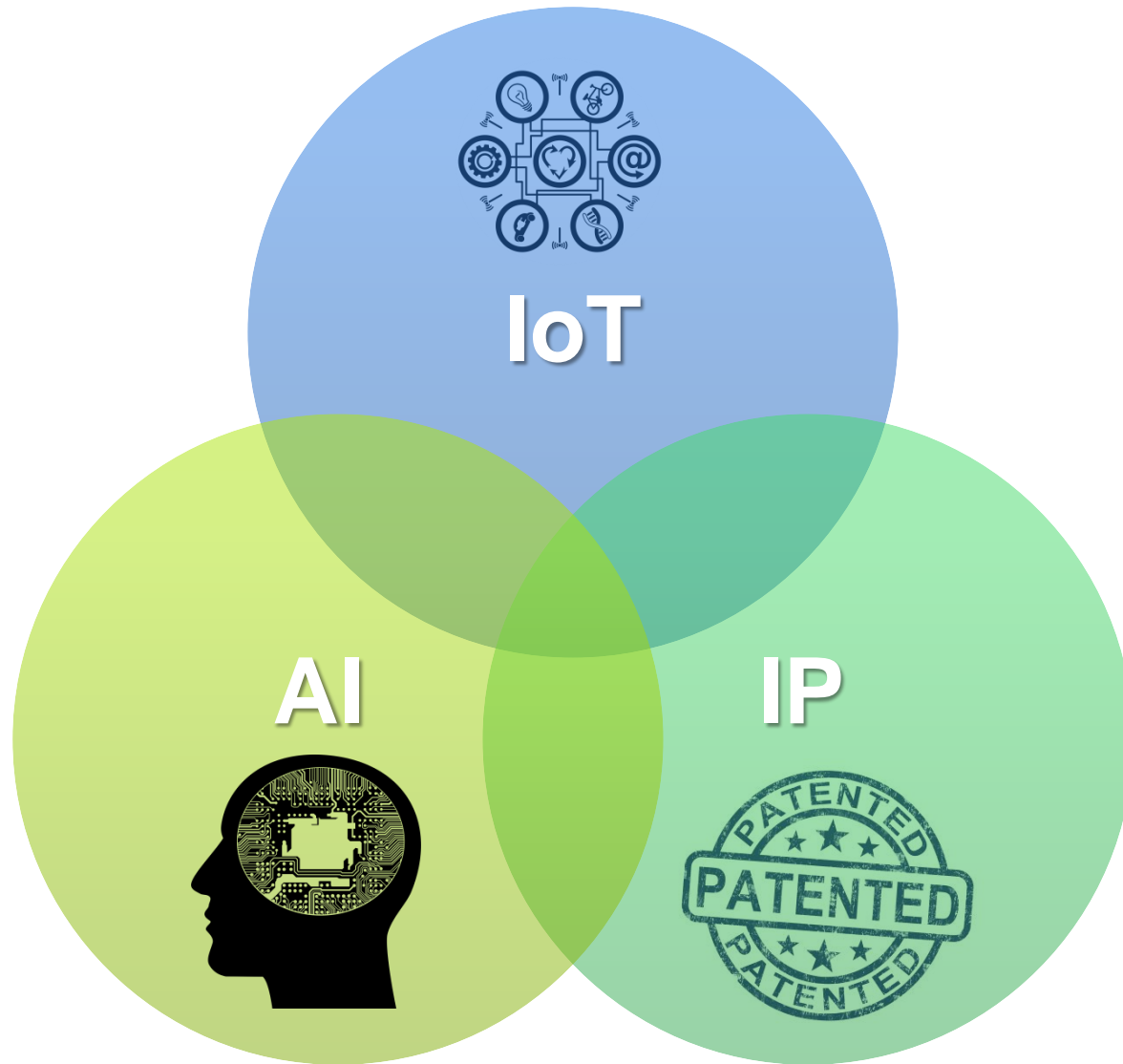


# Mid-to-Long Term Operation Point

- Flexibility in product mix
  - Stress on relatively high margin product
  - Focus on the value of the product
- Strengthen Current product portfolio
  - Tech : SiP for 2Gb and below
  - Cost : Yield rate improvement
- Expand future application market
  - IoT application
  - Edge AI

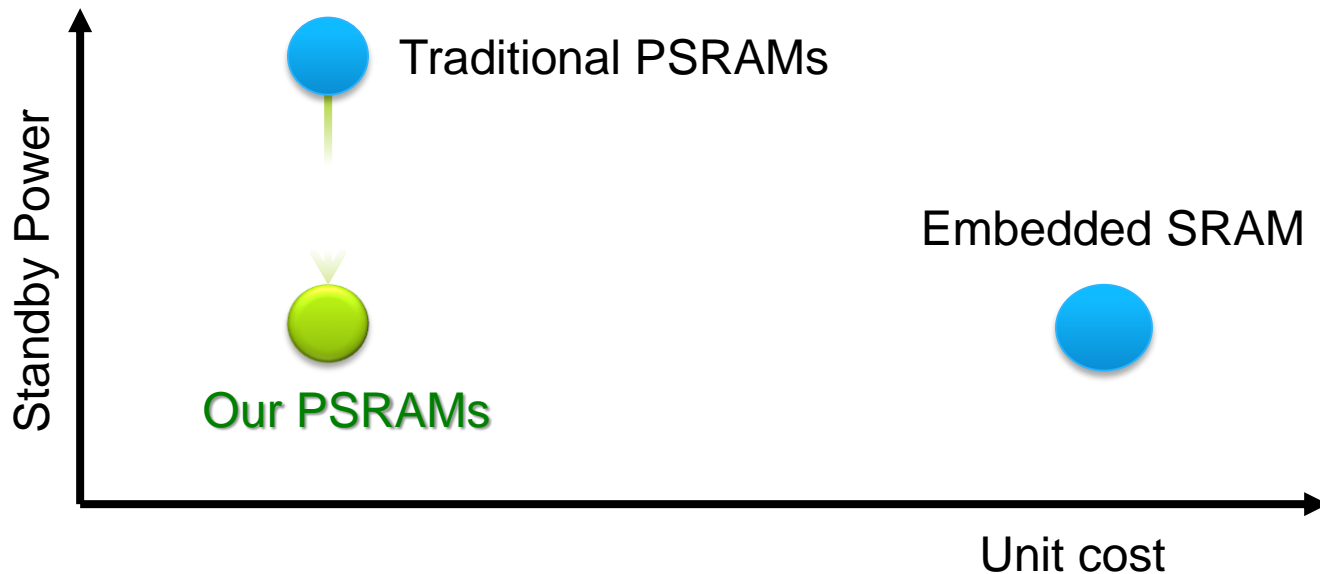


# Future Prospect

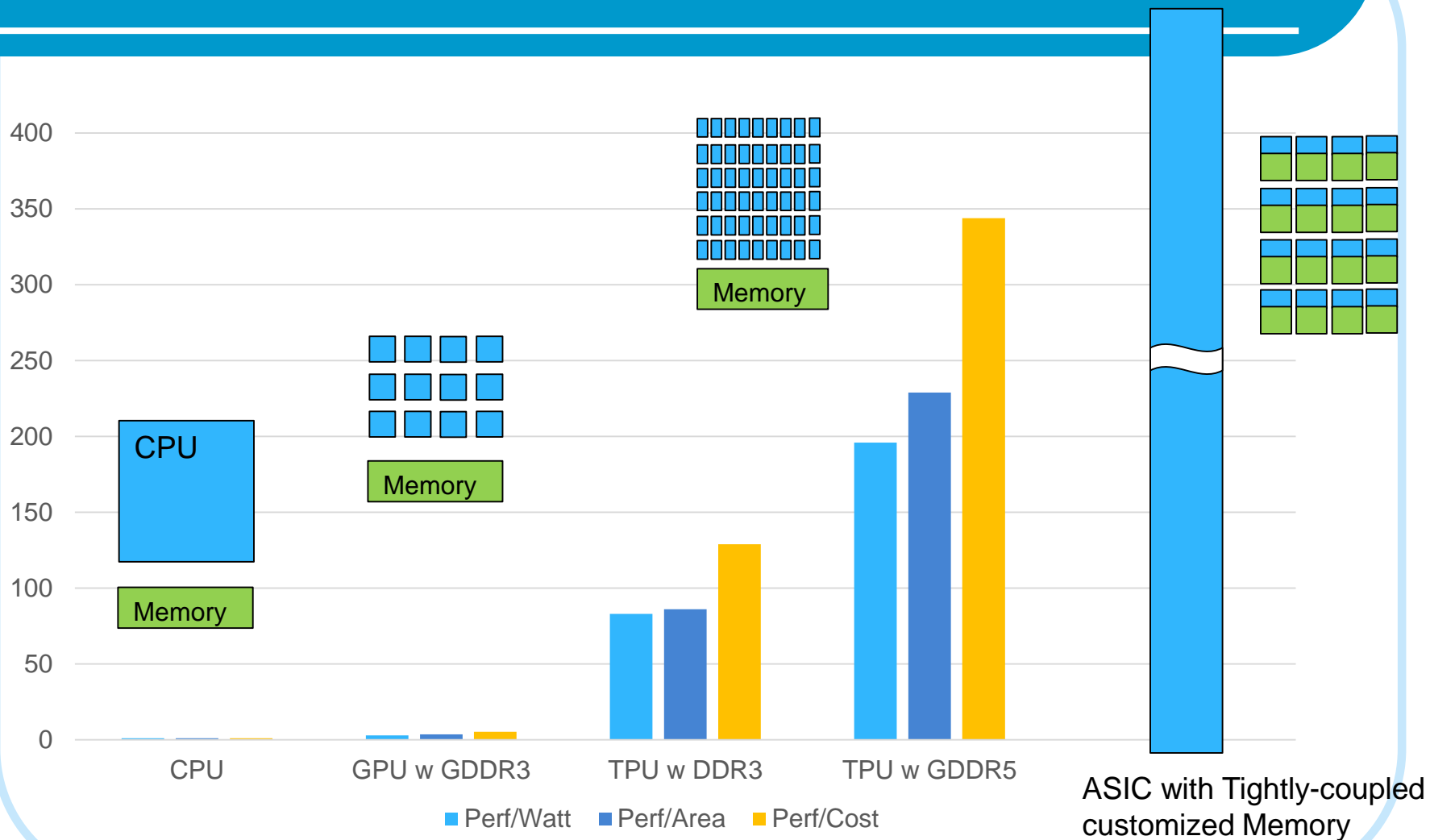


# IoT is here

- Our position in IoT: best memory partner
  - Lowest power
  - Lowest cost
  - **Volume shipping now!**
- Example: NBIoT

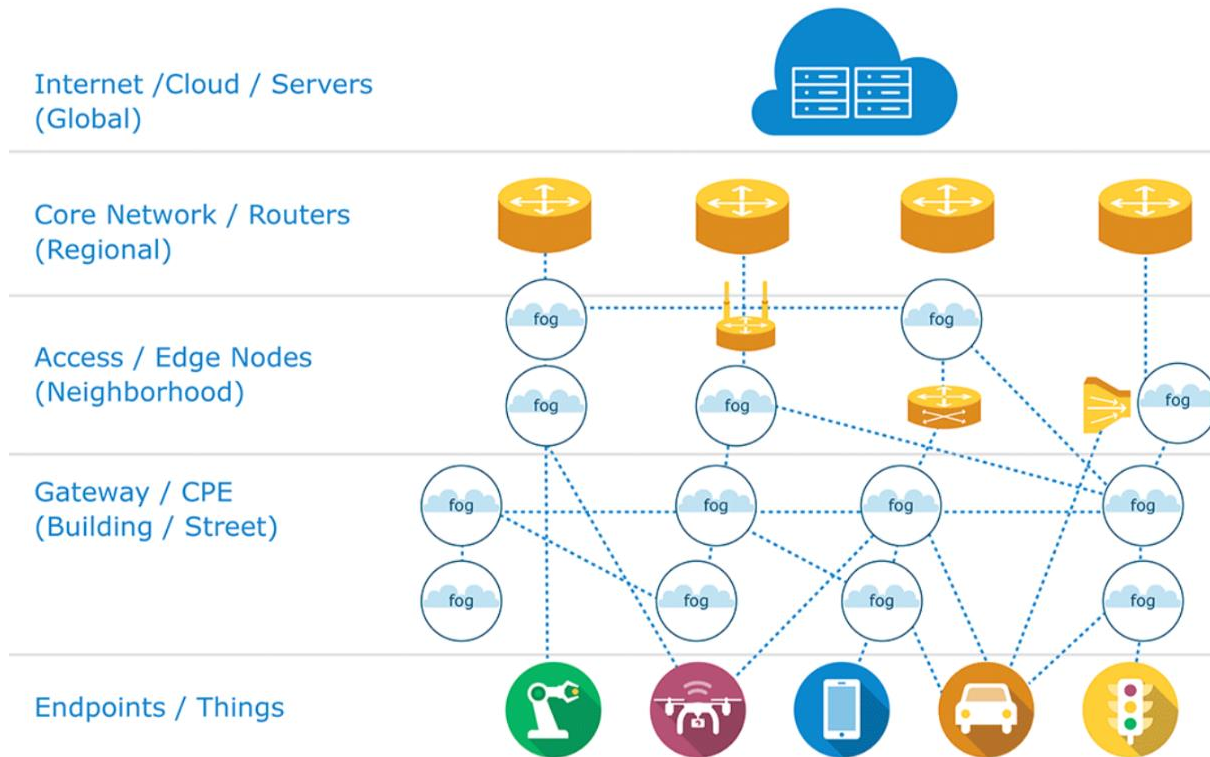


# Memory is bottleneck for AI



Source: Google, Bernstein Research, AP Memory Research

# AI+IoT=Edge Computing



IOT & AI meet at Edge Computing  
We are positioning our memory for it.

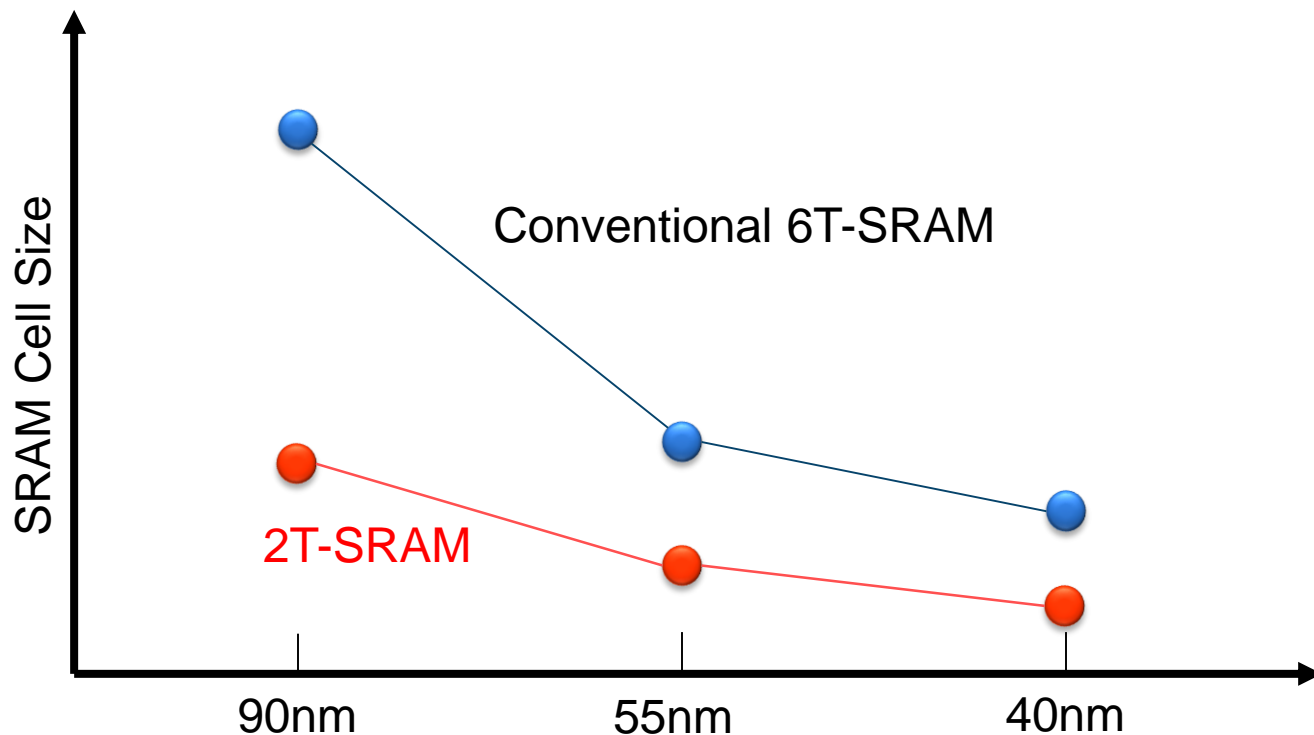
Picture source: <https://mse238blog.stanford.edu/2017/07/rentschc/data-at-the-edge-but-what-does-it-mean/>

# IP for the future

- Ongoing long-range memory architecture research
- Disclosing two IP projects today
  - 2T-SRAM for OLED Display Driver
  - Ferroelectric Memory for 3D Cross-Point Memory

# 2T-SRAM for OLED Driver

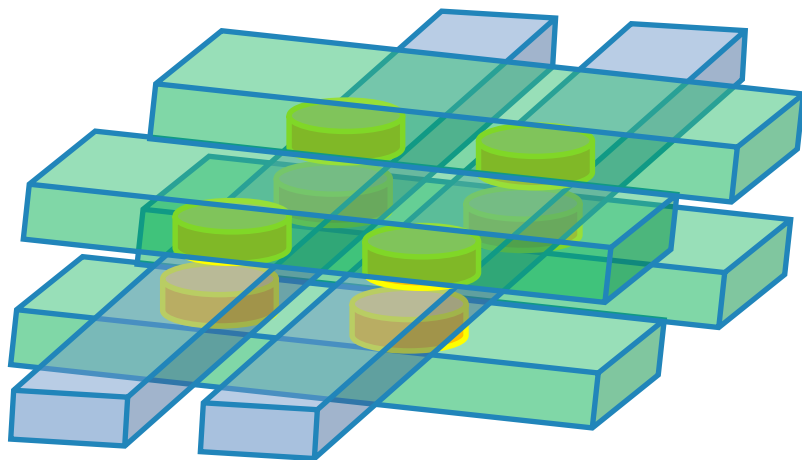
- ~3X smaller than 6T-SRAM





# Ferroelectric Memory Architecture

- 3D Cross-Point Memory





## Q & A

Mailbox : [ir@apmemory.com](mailto:ir@apmemory.com)

Landline : (03)5601651

Cellphone:0965-816531